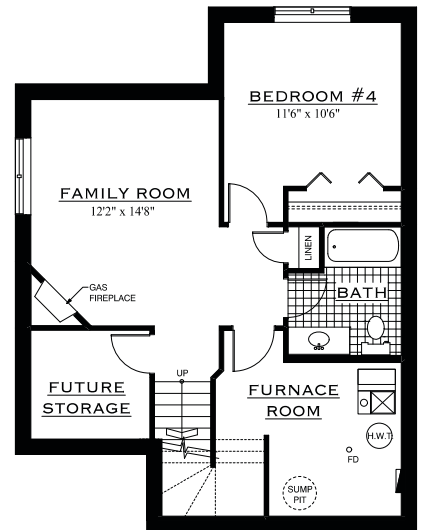
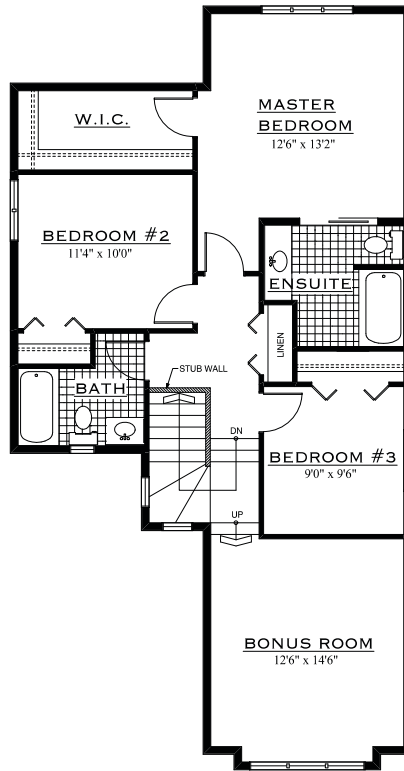
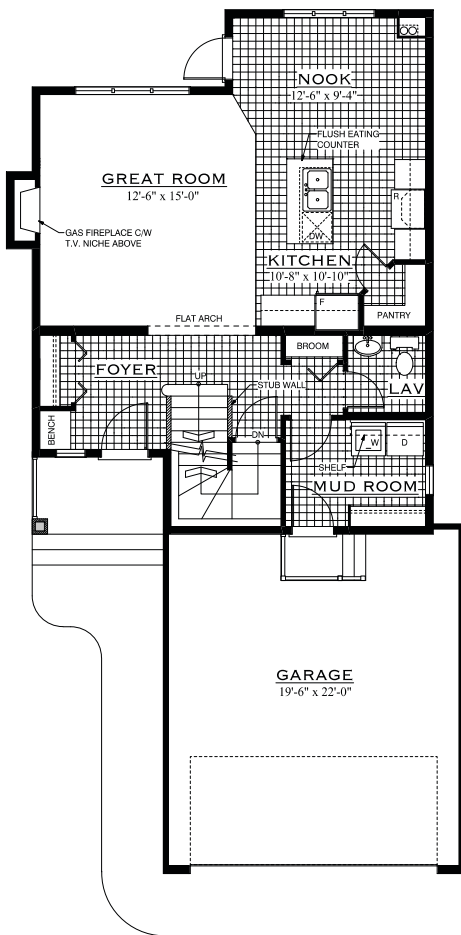


The Buckingham 1709 sq.ft.



NEO-TRADITIONAL TWO STOREY - 1709 SQ.FT.



MAIN FLOOR PLAN
779 SQ.FT.

SECOND FLOOR PLAN
W/ BONUS ROOM
930 SQ.FT.

OPTIONAL BASEMENT PLAN
502 SQ.FT.

The Buckingham 1709 sq.ft.



CRAFTSMAN
TWO STOREY - 1709 SQ.FT.



NEO-TRADITIONAL
TWO STOREY - 1709 SQ.FT.



PRAIRIE
TWO STOREY - 1709 SQ.FT.

V011211

alldritthomes.com

In a continuing effort to improve our homes, we reserve the right to make any modifications and/or substitutions, without notice, should they be necessary. Final dimensions, square footage, specifications and floor plans may vary. See your sales representative for details. E.O.E.

 **Alldritt
Homes**
Building dreams since 1943.