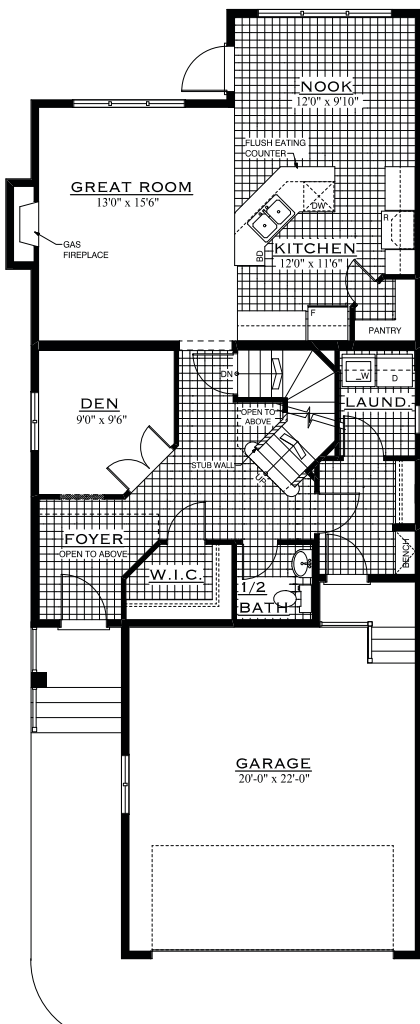


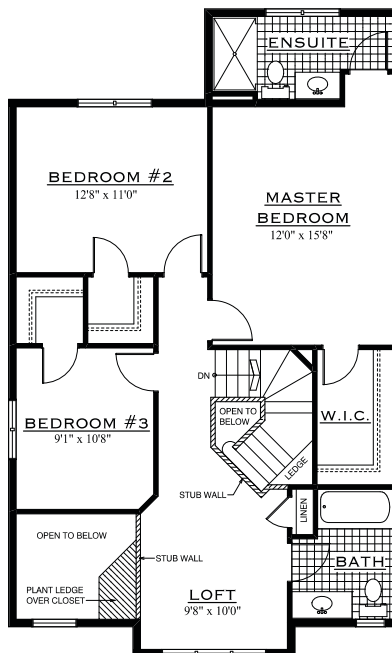
# The Cambridge 1858 sq.ft.



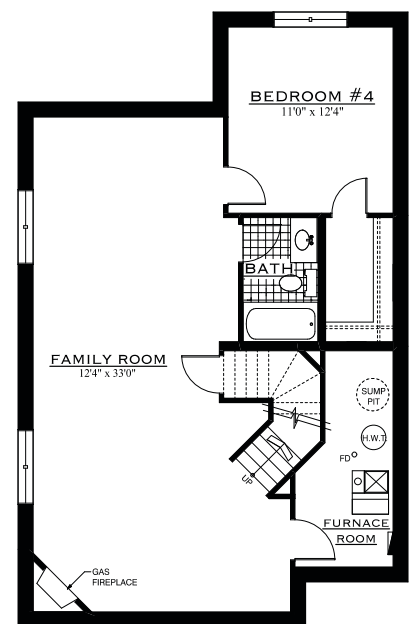
CRAFTSMAN TWO STOREY - 1858 SQ. FT.



MAIN FLOOR PLAN  
968 SQ.FT.



SECOND FLOOR PLAN  
890 SQ.FT.



OPTIONAL BASEMENT PLAN  
715 SQ.FT.

[alldritthomes.com](http://alldritthomes.com)

In a continuing effort to improve our homes, we reserve the right to make any modifications and/or substitutions, without notice, should they be necessary. Final dimensions, square footage, specifications and floor plans may vary. See your sales representative for details. E.O.E.

 **Alldritt  
Homes**  
Building dreams since 1943.

# The Cambridge 1858 sq.ft.

---



**CRAFTSMAN**  
TWO STOREY - 1858 SQ.FT.



**NEO-TRADITIONAL**  
TWO STOREY - 1858 SQ.FT.



**PRAIRIE**  
TWO STOREY - 1858 SQ.FT.

V011211

[alldritthomes.com](http://alldritthomes.com)

In a continuing effort to improve our homes, we reserve the right to make any modifications and/or substitutions, without notice, should they be necessary. Final dimensions, square footage, specifications and floor plans may vary. See your sales representative for details. E.O.E.

 **Alldritt  
Homes**  
Building dreams since 1943.