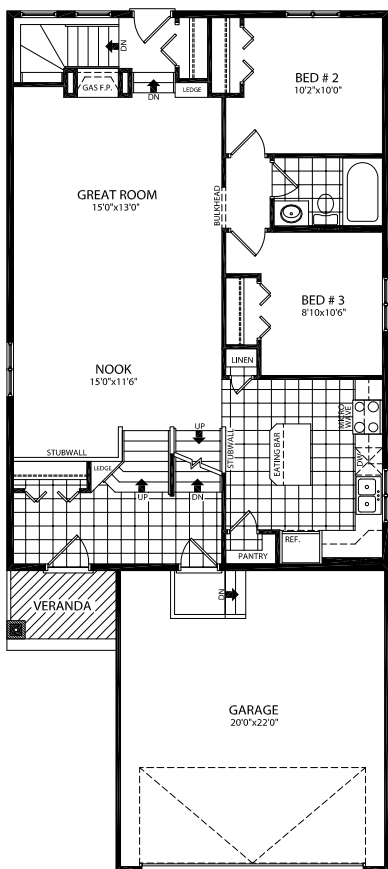


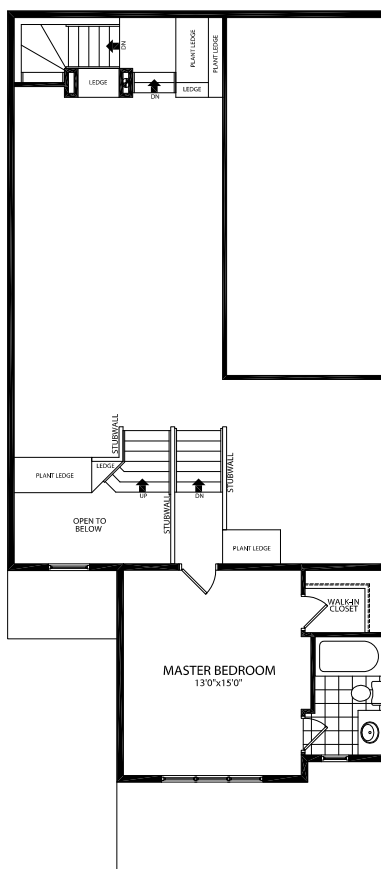
The Kensington 1468 sq.ft.



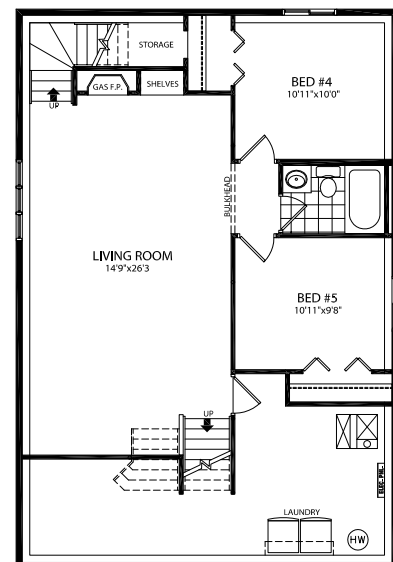
NEO-TRADITIONAL BI-LEVEL - 1477 SQ.FT.



MAIN FLOOR PLAN
1148 SQ.FT.



SECOND FLOOR PLAN
329 SQ.FT.



OPTIONAL BASEMENT PLAN
716 SQ.FT.

The Kensington 1468 sq.ft.



CRAFTSMAN
BI-LEVEL - 1468 SQ.FT.



NEO-TRADITIONAL
BI-LEVEL - 1477 SQ.FT.



PRAIRIE
BI-LEVEL - 1468 SQ.FT.

V050913

alldritthomes.com

In a continuing effort to improve our homes, we reserve the right to make any modifications and/or substitutions, without notice, should they be necessary. Final dimensions, square footage, specifications and floor plans may vary. See your sales representative for details. E.O.E.

 **Alldritt
Homes**
Building dreams since 1943.