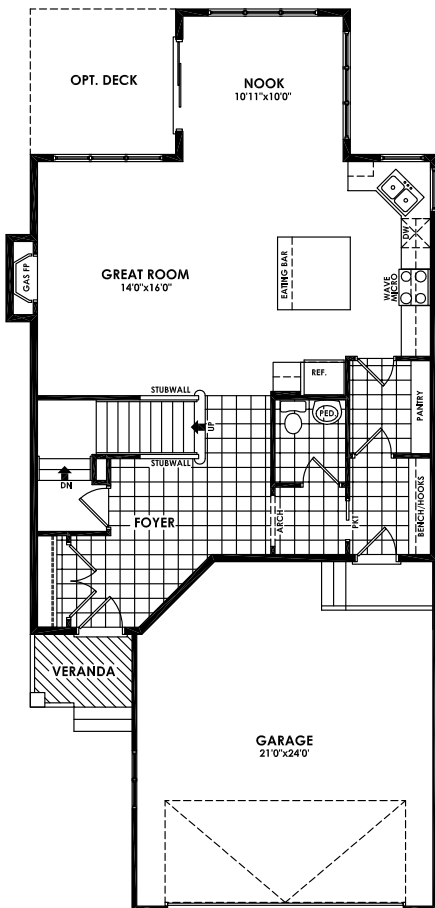


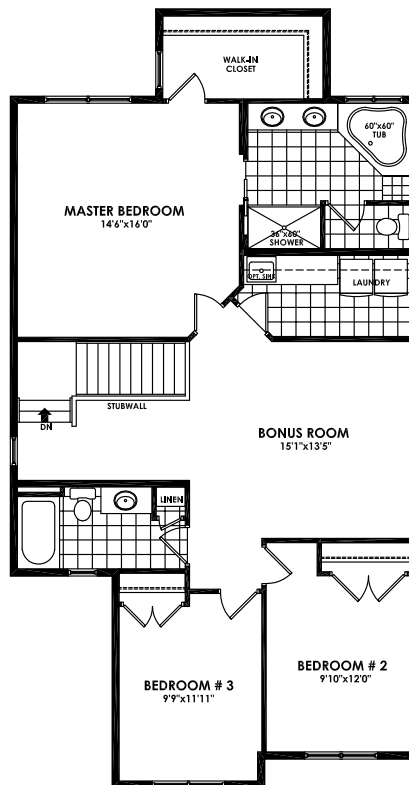
# The Newcastle 2244 sq.ft.



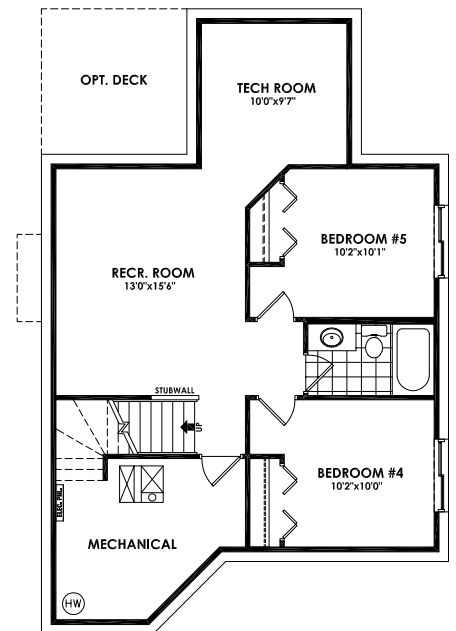
**CRAFTSMAN** TWO STOREY - 2244 SQ.FT.



**MAIN FLOOR PLAN**  
954 SQ.FT.



**SECOND FLOOR PLAN**  
1290 SQ.FT.



**OPTIONAL BASEMENT PLAN**  
664 SQ.FT.

# The Newcastle 2244 sq.ft.

---



**CRAFTSMAN**  
TWO STOREY - 2244 SQ.FT.



**NEO-TRADITIONAL**  
TWO STOREY - 2244 SQ.FT.



**PRAIRIE**  
TWO STOREY - 2244 SQ.FT.

V040913

[alldritthomes.com](http://alldritthomes.com)

In a continuing effort to improve our homes, we reserve the right to make any modifications and/or substitutions, without notice, should they be necessary. Final dimensions, square footage, specifications and floor plans may vary. See your sales representative for details. E.O.E.

 **Alldritt  
Homes**  
Building dreams since 1943.