

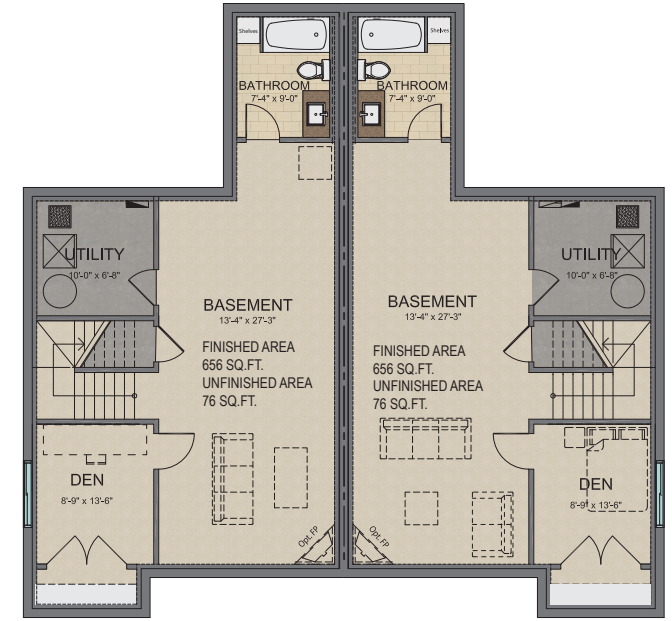
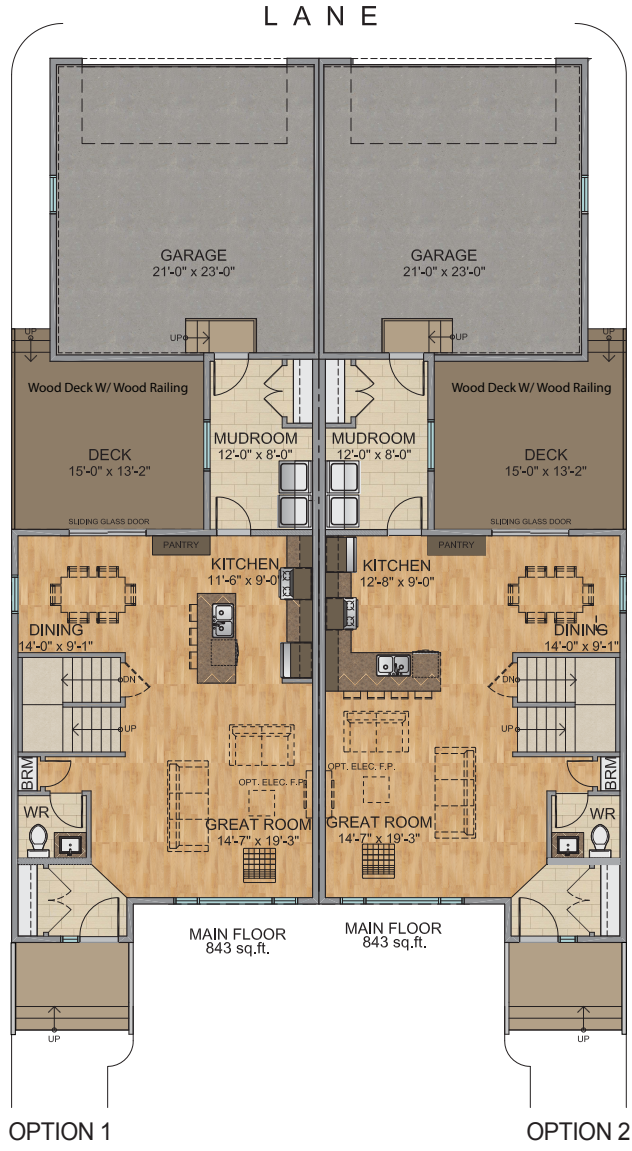


GODSON POINT
in Granville

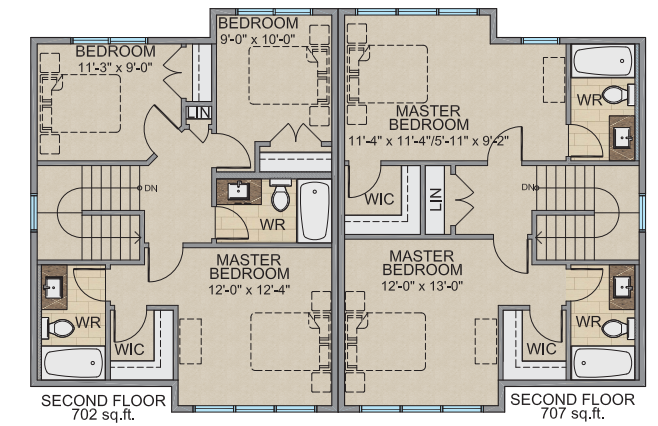


Berkley I & II

1550 sq.ft. | 1555 sq.ft.



Optional Basement Development



LOTS 77,81,85

LOTS 78,82,86

v20151116

BUILD WITH LEGACY

* Plans & specifications are subject to change without notice.
 Steps, as per grading and elevation.
 Illustrations/Renderings are artist's conception only. See sales for details. E.O.E.

