



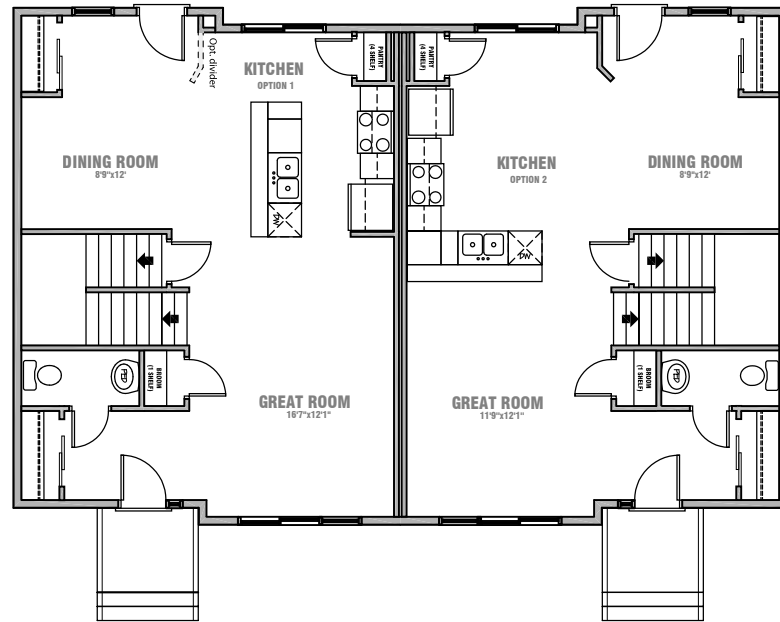
**TURN KEY PROMOTION**

**FREE GARAGE PAD  
& 20'x20' DOUBLE  
GARAGE INCLUDED**

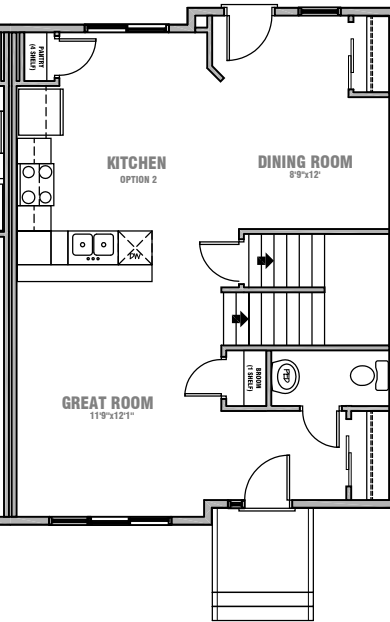
# Berkley III & IV

1309 sq.ft. - 1285 sq.ft.

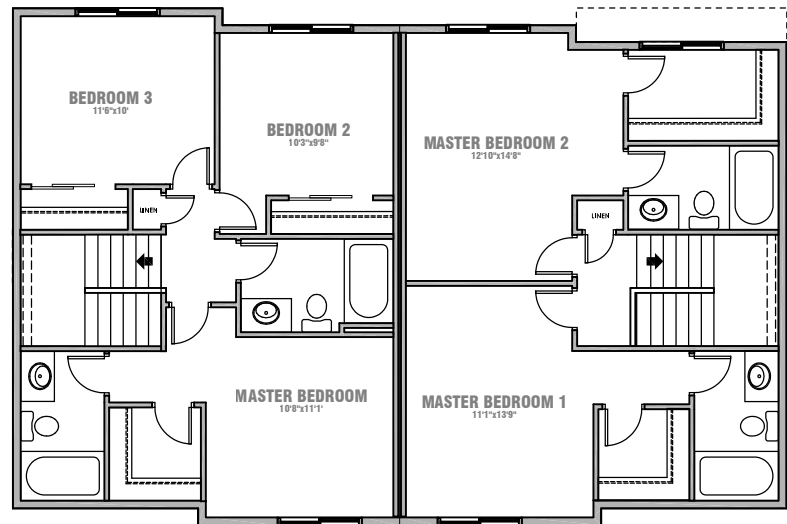
\* For illustrative purposes only only. Exterior will vary.



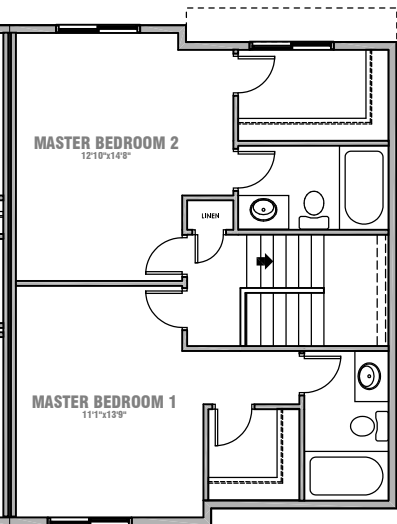
**MAIN FLOOR**  
685 SQ.FT.



**MAIN FLOOR**  
685 SQ.FT.



**SECOND FLOOR**  
3 Bedroom  
624 SQ.FT.



**SECOND FLOOR**  
Double Master  
600 SQ.FT.

In a continuing effort to improve our homes, we reserve the right to make any modifications and/or substitutions, without notice, should they be necessary. Final dimensions, square footage, specifications and floor plans may vary. See your sales representative for details. E.O.E. v20160706

