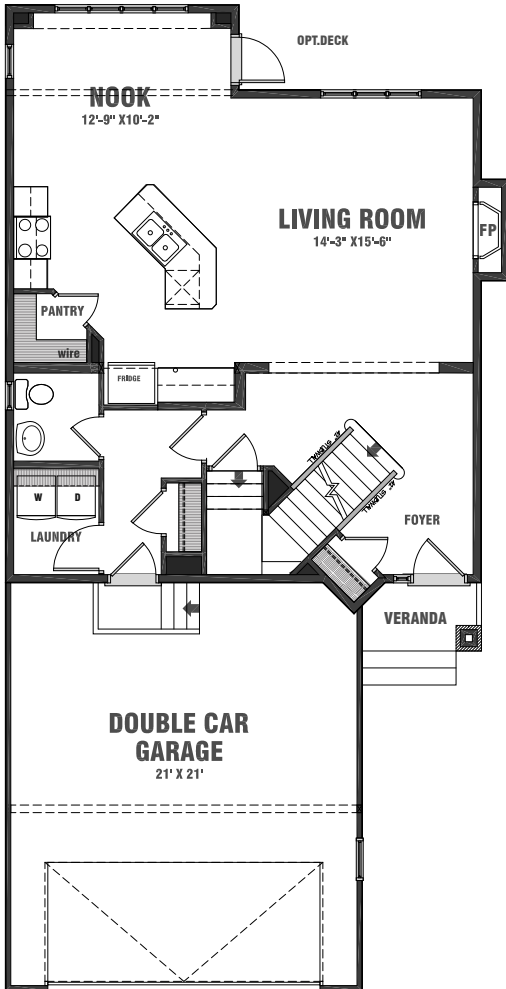
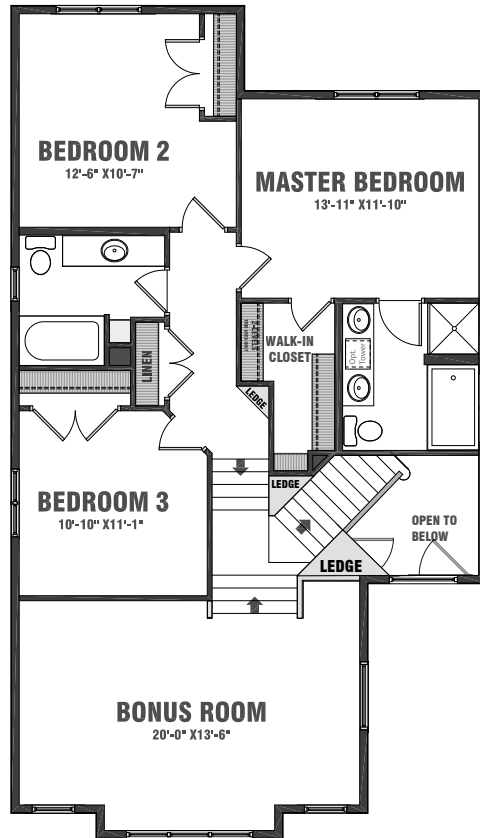


OXFORD

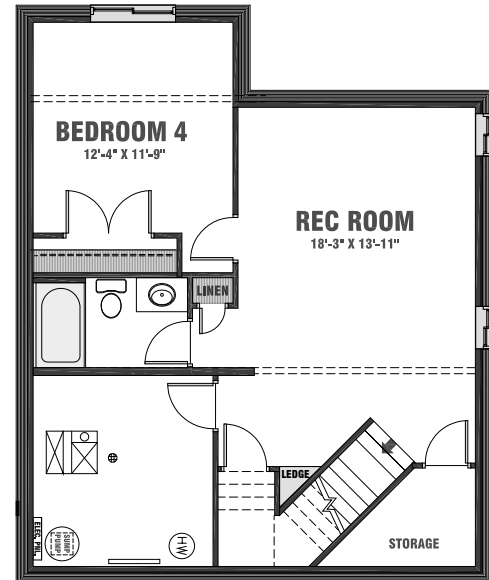
1948 sq.ft. | Two-storey



MAIN FLOOR
889 SQ.FT.



SECOND FLOOR
1059 SQ.FT.



BASEMENT DEVELOPMENT
554 SQ.FT.

aldrithomes.com

In a continuing effort to improve our homes, we reserve the right to make any modifications and/or substitutions, without notice, should they be necessary. Final dimensions, square footage, specification and floor plans may vary. See your sales representative for details. E & O.E 20170207



Building dreams since 1943.

OXFORD

1948 sq.ft. | Two-storey



GRANVILLE



NEO-TRADITIONAL



CRAFTSMAN



PRAIRIE



ARTS & CRAFTS

Base Price _____

Lot Price _____

GST _____

Excluding any upgrades

alldritthomes.com

In a continuing effort to improve our homes, we reserve the right to make any modifications and/or substitutions, without notice, should they be necessary. Final dimensions, square footage, specification and floor plans may vary. See your sales representative for details. E & O.E 20170207

 **Aldritt
Homes**

Building dreams since 1943.