

Richmond III & IV

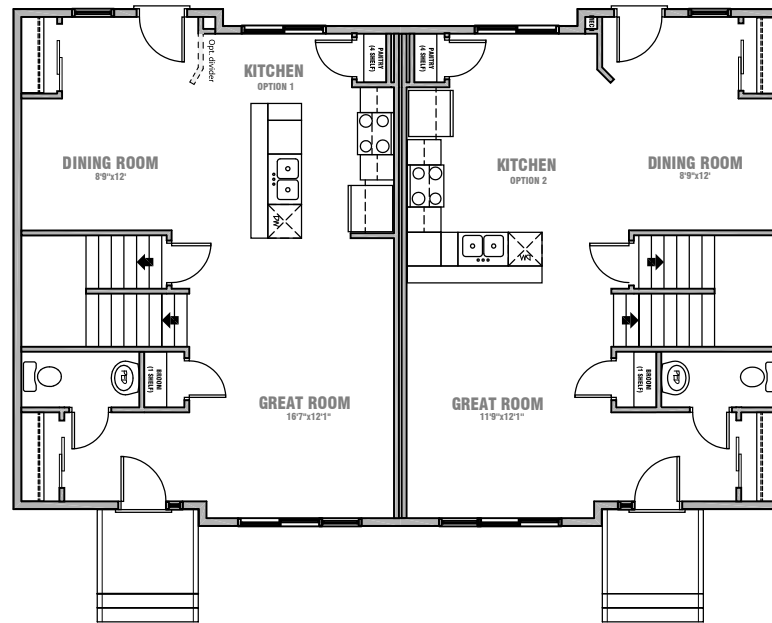
1309 sq.ft. - 1285 sq.ft.

TURN KEY PROMOTION

**FREE GARAGE PAD
& 20'x20' DOUBLE
GARAGE INCLUDED**

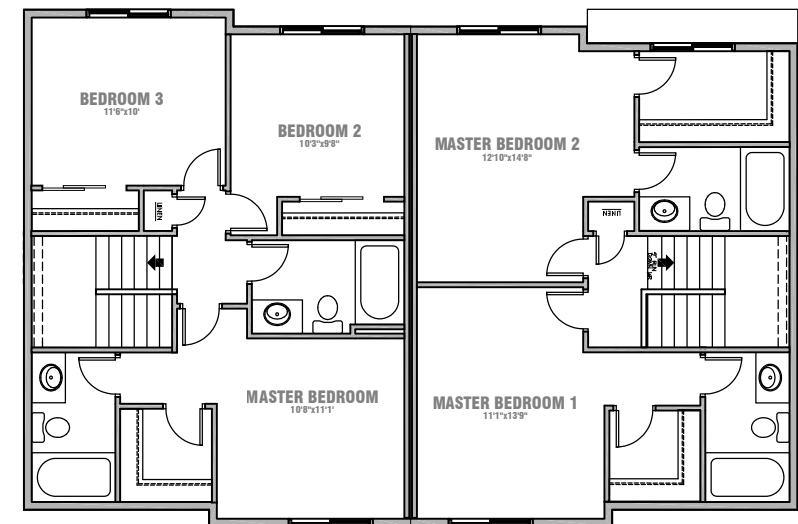


* For illustrative purposes only only. Exterior will vary.



MAIN FLOOR
685 SQ.FT.

MAIN FLOOR
685 SQ.FT.



SECOND FLOOR
3 Bedroom
624 SQ.FT.

SECOND FLOOR
Double Master
600 SQ.FT.

In a continuing effort to improve our homes, we reserve the right to make any modifications and/or substitutions, without notice, should they be necessary. Final dimensions, square footage, specifications and floor plans may vary. See your sales representative for details. E.O.E. v20160706